

Tenor Trombone 2

# Capriol Suite

## 1. Basse dance

Peter Warlock

Allegro moderato

16

A

9

Musical staff for measures 1-16 of 'Basse dance'. The staff is in bass clef with a key signature of one flat (B-flat) and a 3/4 time signature. The first 16 measures are indicated by a thick black bar.

26

7

B

sim.

*mf*

Musical staff for measures 26-32 of 'Basse dance'. Measures 26-32 are indicated by a thick black bar. The staff continues with notes and rests, including a dynamic marking of *mf* and the instruction 'sim.'.

39

8

C

8

*f*

Musical staff for measures 39-46 of 'Basse dance'. Measures 39-46 are indicated by a thick black bar. The staff continues with notes and rests, including a dynamic marking of *f*.

60

Musical staff for measures 60-64 of 'Basse dance'. The staff contains notes and rests.

65

Musical staff for measures 65-72 of 'Basse dance'. The staff contains notes and rests, including accents over the notes.

## 2. Pavane

Allegretto, ma un poco lento

1

37

A

*mp*

Musical staff for measures 1-37 of 'Pavane'. The staff is in bass clef with a key signature of one flat (B-flat) and a 2/4 time signature. The first 37 measures are indicated by a thick black bar.

43

Musical staff for measures 43-53 of 'Pavane'. The staff contains notes and rests, ending with a thick black bar for the final measure.

54

B

poco più lento rall. molto a tempo

7

4

3

5

*pp*

Musical staff for measures 54-59 of 'Pavane'. The staff contains notes and rests, including a dynamic marking of *pp*.

## 3. Tordion

Con moto

1

TACET

Musical staff for measures 1-6 of 'Tordion'. The staff is in bass clef with a key signature of one flat (B-flat) and a 6/4 time signature. The first 6 measures are indicated by a thick black bar.

Tenor Trombone 2

2

4. Bransles

1 Presto

18 A 8

27 B

2 2

*f* *f*

35 C

2 2

*f* *f*

43 D 10 E 10 F 10

73 G 10 H 12

95 J 8 K 2 2

*f* *f*

111 L 4 5

*mf*

121 M 10 N Prestissimo 9

143

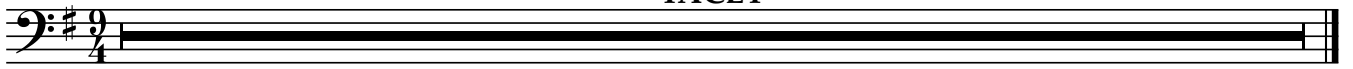
146

*f*

5. Pieds-en-l'air

1 Andantino tranquillo

TACET



6. Mattachins

1

28

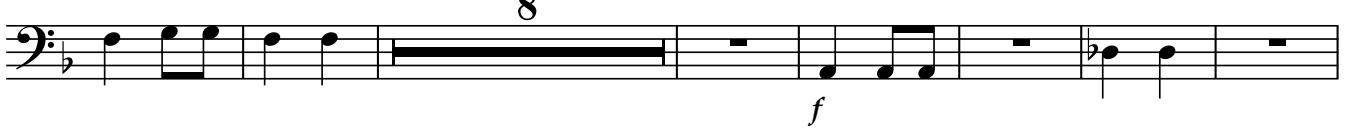
A



35

8

B



50



61

C

4



71

